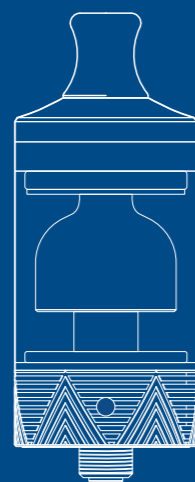


[facebook.com/Innokin.Technology](https://www.facebook.com/Innokin.Technology)
[instagram.com/innokintechnology](https://www.instagram.com/innokintechnology)
twitter.com/innokintech
[reddit.com/r/innokin](https://www.reddit.com/r/innokin)
support@innokin.com



INNOKIN®
ARES-2
MTL RTA

Platform
series
 DESIGNED BY
 P. BUSARDO
 VAPINGREEK

WARNING: This product is only intended for use by adults of legal smoking age. This product has not been evaluated by the Food and Drug Administration and is not intended to treat, mitigate, prevent or cure any disease or condition. This product is not intended for use as a smoking cessation device. This product may be used with e-liquids that contain nicotine and should not be used by children, women who are pregnant or breastfeeding, or persons with or at risk of heart disease, high blood pressure, diabetes or taking medicine for depression or asthma, or who otherwise may be sensitive to nicotine. This product includes small parts such as the mouth piece. Always keep any small parts out of reach of children and pets to prevent swallowing or other harm.

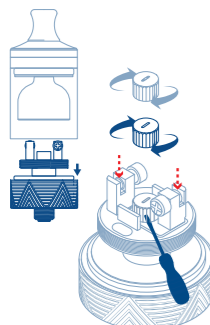


IMPORTANT: DO NOT USE A COIL AT A RESISTANCE LOWER THAN YOUR DEVICE CAN HANDLE. YOU SHOULD HAVE SOME KNOWLEDGE OF BATTERY SAFETY AND OHMS LAW BEFORE ATTEMPTING TO BUILD THIS ATOMIZER. THE INCLUDED COILS ARE 1 OHM KANTHAL COILS.

NOTE: FOR ADDITIONAL AND MORE DETAILED INFORMATION, INCLUDING BUILDING YOUR OWN COILS, SCAN THE QR CODE FOR INSTRUCTIONAL VIDEOS.

1 ACCESS THE BUILD DECK

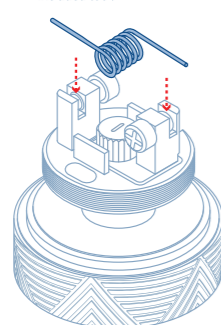
a. Unscrew the bottom cap to access the build deck



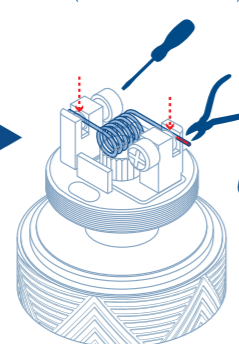
b. Adjust Crossing Airflow Control

2 MOUNT THE COIL

a. Mount the pre-built coil or one that you have created as shown. Tighten it using the screws and included tool.

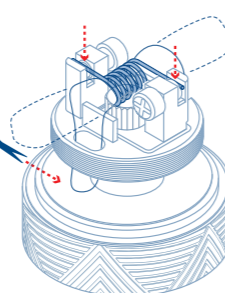


c. Be sure that the coil leads are trimmed close to prevent a short circuit. (Coil leads cannot touch bell.)



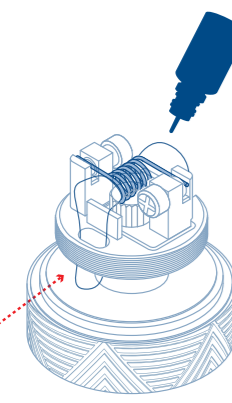
3 WICK THE COIL

a. Wick the coil with cotton.
 b. Thicker VG liquids will require less cotton than thinner PG liquid.
 c. Cut the cotton so that it barely touches the bottom of the tank.



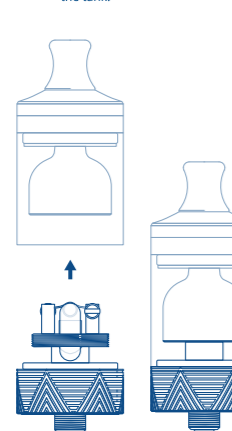
4 PRIME THE COIL & SET THE WICK

a. Prime the coil lightly with e-liquid to get it started and allow easy setting of the wick into the wick channels.



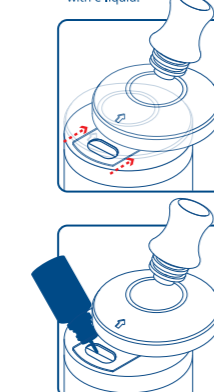
5 REPLACE THE BUILD DECK

a. Screw the build deck back into the tank.



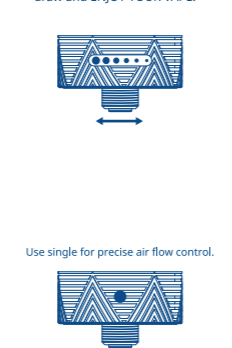
6 FILL THE TANK

a. Remove the drip tip. Press "PUSH TO FILL", in the direction of the arrow, to slide open cap and fill with e-liquid.



7 ADJUST THE AIR FLOW

a. Adjust the airflow to a comfortable draw and ENJOY YOUR VAPE!

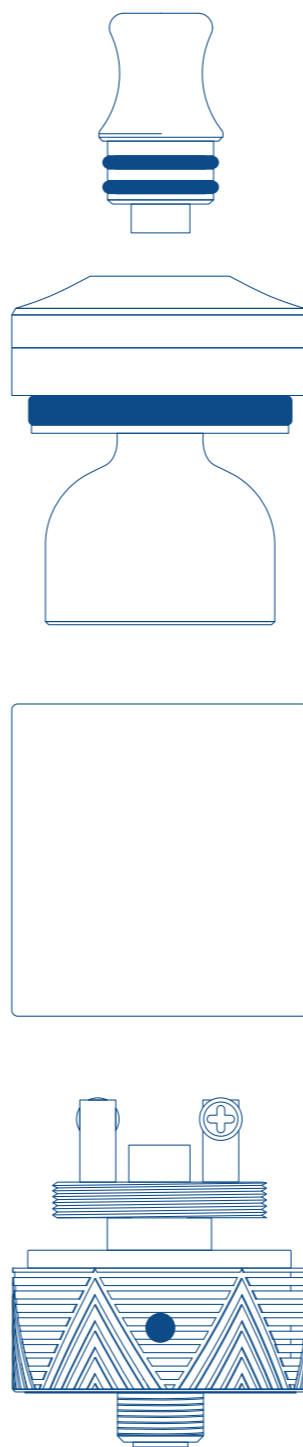


Use single for precise air flow control.

INNOKIN®
ARES-2
MTL RTA

Platform
series
 DESIGNED BY
 P. BUSARDO
 VAPINGREEK

Phil Busardo
Phil Busardo



DRIP TIP
 O-RING
 TOP CAP
 SLIDING TOP FILL CAP
 TOP CAP O-RING
 BELL CHAMBER
 GLASS
 POST SCREWS
 BASE / BUILD DECK
 BASE O-RING
 AIR FLOW CONTROL