

user manual

**COOLFIRE MINI**



## CoolFire MINI Vaping System

Congratulations on your purchase of this Innokin CoolFire MINI Advanced Personal Vaporizer. For the best possible vaping experience, please read carefully, and follow this user manual.

The CoolFire MINI is the newest in the line of internationally bestselling Innokin CoolFire vaporizers. Ultra compact design and features a greater range of Variable Wattage, advanced safety protections and 'Vape while charging' Technology.

The CoolFire MINI has a variable voltage range of 3.0 – 7.5 volts adjustable in .1 volt increments and a variable wattage range of 6.0 – 40.0 Watts, adjustable in .5 watts increments.

The CoolFire MINI has a flush 510 connection with a spring loaded gold-plated positive pin and durable stainless steel threading. Operated via three durable buttons and has a large high quality bright OLED screen the CoolFire MINI is easy to use, stylish and powerful.

Please check and verify that your CoolFire MINI is an authentic Innokin Technology product.

**To verify this CoolFire MINI is a real Innokin Technology device please:**

- 1) Locate the label on the packaging and scratch the silver to reveal your CoolFire MINI Unique Authorization number.
- 2) Visit: <http://www.innokin.com/verify-device/>
- 3) Enter the Unique Authentication number in the Authentication field.
- 4) Verify your CoolFire MINI is a genuine Innokin Vaporizer.

If you have any questions or suggestions, please write to us at [support@innokin.com](mailto:support@innokin.com).

**Join our social media channels for the latest Innokin information and great contests!**

Innokin Facebook Page: <https://www.facebook.com/Innokin.Technology>

Innokin Instagram: <https://www.instagram.com/innokintechnology>

Innokin Subreddit: <https://www.reddit.com/r/innokin>

Innokin Twitter: <https://www.twitter.com/innokintech>

**WARRANTY INFORMATION:**

Innokin Technology provides a 90 day after sales service warranty to all authorized vendors. Please consult the official Innokin website ([www.innokin.com](http://www.innokin.com)) or your Authorized Innokin Technology Vendor for more information and terms of service. The proof of purchase is needed for the 90 Day Limited Warranty.

For more information and to download the warranty card please visit:  
<http://www.innokin.com/innokin-90-day-limited-warranty-program/>

### ***SAFETY GUIDELINES AND WARNING:***

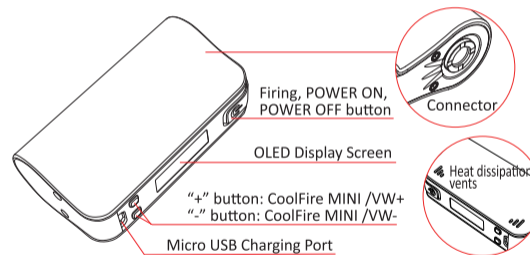
**Please read this section carefully to ensure you receive maximum benefits from your CoolFire MINI and enjoy vaping with it in the most safe and effective ways possible.**

1. This Advanced Personal Vaporizer is intended for use by adults of legal smoking age (18+). This product is not recommended for non-smokers, young people under the age of 18 years, pregnant or breast feeding women and those experiencing general ill health.
2. This product may be used with e-liquids that contain nicotine. **If you are using e-liquid containing nicotine please refer to the information provided in section “IMPORTANT INFORMATION ABOUT USING NICOTINE-CONTAINING E-LIQUIDS”** or check with your e-liquid provider for more information.
3. This Advanced Personal Vaporizer is not intended to treat, mitigate, prevent or cure any disease or condition. It is not intended for use as a smoking cessation device.

4. This Advanced Personal Vaporizer is only designed to be used with high quality e-liquid. It is not intended for use with loose tobacco leaf or herbal substances. Innokin is not responsible for any atomizer or battery damage due to the use of low quality e-liquid, dry herb, or other materials for which the CoolFire MINI Advanced Personal Vaporizer was not designed.
5. Always keep this product out of reach of children and pets.
6. Do not misuse, mishandle or store your CoolFire MINI Advanced Personal Vaporizer improperly.
7. Do not attempt to repair the product by yourself as damage or personal injury may occur.
8. In order to guarantee the normal functioning of your CoolFire MINI Advanced Personal Vaporizer, do not allow the battery power level to drop below two bars. When the battery power level drops to one bar, the device should be charged immediately to maintain the lifespan. Innokin is not responsible for battery damage caused by allowing the device to discharge completely.

9. In order to prolong the operation of the Advanced Personal Vaporizer, please do not use, place or store it in excessively hot or cold environments.
10. Your CoolFire MINI Advanced Personal Vaporizer is not waterproof. Keep it dry at all times.
11. Do not allow any liquids or e-juice to enter the device through the top threading or the USB ports. If any liquids enter the device, or come into contact with the PCB, please discontinue using or charging the device and contact your local Authorized Innokin Vendor immediately.
12. Innokin is not responsible for battery and charger explosions, or malfunctions, due to the use of a low-quality charger. Only use the original CoolFire MINI Advanced Personal Vaporizer starter kit Micro USB cable to charge the device. We recommend that you use a high quality 5V 1A USB wall charger (CE/UL Certified)
13. The CoolFire MINI Advanced Personal Vaporizer is not designed for use with a car charger. This product does not come included with a car charger.

14. Obey local laws or regulations regarding Electronic Cigarettes when vaping. If you are in an area where there are any bans or potential dangers, please do not use your CoolFire MINI Advanced Personal Vaporizer.



### ***The Primary Features of The CoolFire MINI:***

#### **Battery Level Indicator:**

The CoolFire MINI battery capacity is displayed via **green**, **yellow** and **red** LED lights.

**Green = Almost fully Charged.**

When the CoolFire MINI is fully recharged the LED light will go off.

**Yellow = Half Power.**

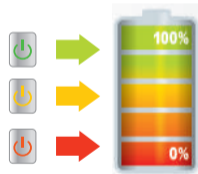
**Red = Low Power. Charge the CoolFire MINI**

#### **Variable Voltage:**



Voltage can be adjusted from 3.0 – 7.5 volts in .1 volt increments.

#### **Variable Wattage:**

Wattage can be adjusted from 6.0 – 40.0 Watts in .5 watts increments



#### **ON/OFF Battery Switch:**

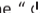

Press the power button “” three times to turn on the CoolFire MINI. Once the CoolFire MINI is on, hold down the power button to activate the atomizer. When the CoolFire MINI is not in use, press the power button “” three times in succession to power off the CoolFire MINI. Always power off the CoolFire MINI when it is not being used, or when it is going to be stored in a pocket, bag or purse.

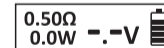
#### **FLIP OLED SCREEN ORIENTATION:**

Hold "+" and "-" button for 3 seconds to flip the horizontal orientation of the screen.

#### **SAFETY:**

##### **15 second cutoff:**

If the “” button is held for 15 seconds or longer the CoolFire MINI Advanced Personal Vaporizer LED lights will flash and then stop firing until the “” button is released and pressed again.



#### Low Voltage Warning

The Red LED and Battery bar will blink when the battery capacity is lower than 3.3V and the CoolFire MINI will automatically power off.

0.50Ω  
0.00V 40.0W 

#### Short Circuit/Atomizer Protection:

Short Circuit/Atomizer Protection protects the CoolFire MINI Advanced Personal Vaporizer against shorted atomizers and will stop the unit from functioning in unsafe conditions.

The CoolFire MINI features automatic real-time atomizer Ohms detection. If the resistance of the atomizer is lower than 0.2, the Ohms bar will blink and the CoolFire MINI will not power on.

0.20Ω  
0.00V 40.0W 

**SHORTED**

#### Check Atomizer:

When the atomizer is not connecting properly , or resistance more than 9.9 Ohm , the screen will display " **CHECK ATOMIZER** ".

The CoolFire MINI features automatic real-time battery voltage detection.

0.50102  
4.20V 100

#### Overheat Protection:

The screen will display " TOO HOT " if the PCB is overheated.

The CoolFire ACE features automatic real-time PCB Chipset temperature detection.

#### Over-Discharge Protection:

The CoolFire MINI Advanced Personal Vaporizer monitors the battery voltage and will automatically power off when the battery over discharged.

**Remembers last Voltage or Wattage setting:**

When the CoolFire MINI is turned off it will remember the current voltage or wattage setting and it will retain the setting when the CoolFire MINI is powered back on.

**High compatibility 510 connector:**

The CoolFire MINI threading is compatible with all standard 510 clearomizers & atomizers including the iClear30, iClear30B, iClear30S, Gladius-X, and the iSub Tanks.

**OPERATION GUIDE:**

The CoolFire MINI has three buttons: "⏻" button, "+" button and "-" button.

"⏻" button: Power

"+" button: CoolFire MINI / VW+

"-" button: CoolFire MINI / VW-

All CoolFire MINI settings can be easily changed without the use of a menu system. The large OLED screen readily displays all important information.

**To POWER ON the CoolFire MINI:**

Pressing the power button "⏻" three times in rapid succession will power on the CoolFire MINI Advanced Personal Vaporizer. The main LED light will blink from red to yellow to green after which the CoolFire MINI Advanced Personal Vaporizer will enter standby mode. The final color of the LED will indicate the current power level.

When the CoolFire MINI Advanced Personal Vaporizer has been powered on Hold the "⏻" button down to activate the unit. The color of the LED when the button is pressed indicates the current power level.

When the button "⏻" is pressed (with a clearomizer attached) the OLED screen will display the attached atomizer resistance, voltage and wattage and remaining battery charge.

When the button “⏻” is continuous pressed (with a clearomizer attached ) , the OLED screen will display

0.50Ω 10.0S  or 0.50Ω 32.0W 1.0S 

To POWER OFF the CoolFire MINI :

OFF  
Click 3x ON

#### Ohms Meter & Battery Level Indicator & Puff Counter:

With an atomizer attached, hold both the “+” and “-” buttons simultaneously and the screen will display: the resistance of the attached atomizer, the battery voltage, the number of puffs since the device was last turned off and the last set voltage or wattage.

0.50102 100  
4.20V

#### Enter Variable Wattage Mode:

Press and hold the "+" button and the “⏻” button for 2 seconds to enter variable wattage mode.

0.50Ω 40.0W   
0.00V

#### Adjust Variable Wattage:

When the CoolFire MINI is in variable wattage mode press the "+" or "-" button to increase or decrease the wattage. Hold the button down to quickly increase or decrease the set wattage.

The CoolFire MINI wattage can be adjusted from 6.0 to 40 watts in .5 watt increments by pressing the "+" or "-" buttons. If the wattage is decreased below 6 Watts it will cycle up to 40 Watts. If the wattage is increased from 40 Watts it will cycle down to 6 watts. Press the button “⏻” to lock the set wattage and fire the CoolFire MINI.

**Enter Variable Voltage Mode:**

Press and hold the “-” button and the “⏻” button for 2 seconds to enter variable voltage mode.

The image shows a rectangular OLED screen with a black background. It displays four pieces of information in white text: '0.50Ω' in the top left, '0.0W' in the bottom left, '4.00V' in the top right, and a battery level icon (a rectangle with five vertical bars of increasing height) in the bottom right.

In variable voltage mode the CoolFire MINI voltage can be adjusted from 3.0 to 7.5 volts in .1 volt increments by pressing the "+" or "-" buttons.

**Adjust Variable Voltage:**

When the CoolFire MINI is in variable voltage mode press the "+" or "-" button one time and then press it again to decrease the voltage. Hold the button down to quickly increase or decrease the set voltage.

The CoolFire MINI voltage can be adjusted from 3.0 to 7.5 volts in .1 volts increments by pressing the "+" or "-" buttons. If the voltage is decreased below 3 volts it will cycle up to 7.5 Volts. If the voltage is increased from 7.5 Volts it will cycle down to 3 volts. Press the button "⏻" to lock the set voltage and fire the CoolFire MINI.

**Important: Explaining Low-Resistance / High Wattage Vaping**

To ensure you have the best possible vaping experience it is important to have a basic understanding of wattage, voltage and coil resistance. There is a range of standard coil resistances: 2.1, 1.7, 1.4, 1.1, 0.8, 0.5 ohm etc and Rebuildable Atomizers or Drippers (RBA/RDA) may even be lower. The CoolFire MINI can fire between resistances of 3.1 to .2 ohm and you can clearly see the resistance of the attached clearomizer on the OLED screen.

We would suggest that for coil resistances of 1.7 – 2.1 ohm you can begin with a setting of 8 Watts and then increase the Wattage until you find your perfect setting. For resistances of 0.5, you can try a setting of 25 Watts and increase the wattage until you find your perfect vaping setting.

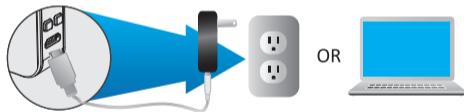
We would suggest that for coil resistances of 1.7 – 2.1 ohm you can begin with a setting of 4.0 Volts and then increase the Voltage until you find your perfect setting. For resistances of 0.5, you can try a setting of 3 Volts and increase the voltage until you find your perfect vaping setting.

If you have any questions please contact your local Authorized Innokin Vendor.

**Important:**

The CoolFire MINI will only fire variable voltage or variable wattage depending on the last setting chosen; it will not fire both. You must choose either Variable Voltage or Variable Wattage.

**How to Charge the CoolFire MINI Advanced Personal Vaporizer:**



To charge your CoolFire MINI, connect your micro USB charging cable to the charging port of your device. Connect the other end of the micro USB charging cable to the USB port of a computer or a wall charger.

Please use high quality, certified CE/UL/FCC wall charger.

When the CoolFire MINI is being charged, the main LED power light will change from red to green according to the battery level capacity. The LED light will go off when CoolFire MINI is fully charged.

0.50Ω 4.00V 0.0W

**'Vape while charging' Technology**

The CoolFire MINI is recharged with a Micro USB cable. When plugged into a power source the CoolFire MINI can also be vaped and charged at the same time with Innokin Technology's 'Vape while you charge' pass-through technology.

#### **IMPORTANT Charging Information:**

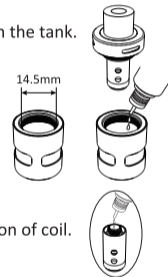
Only charge Innokin devices with a high quality CE/UL Certified 5V/1A wall charger.

- Never charge a battery that has been damaged or dropped.
- Never plug a charger into a non-approved mains power transformer.
- Do not overcharge. Remove the battery from the charger when charging is complete.
- Never leave a charging battery unattended.
- Only use the included high quality charging cable.
- Wall Adapters should be CE / UL / FCC certified, high quality and authentic.
- Do not charge your vaporizer with your car.
- If traveling by airplane, do not pack your device into your check in baggage. Speak with your airline about e cigarette/vaporizer transport guidelines.
- If there are any issues with the device please contact your Authorized Innokin vendor immediately.

**Please skip the following section about how to refill and replace a coil if it is express kit.**

#### **How to refill the Slipstream Tank:**

1. Press down the top cap of the tank and unscrew it from the tank.
2. Carefully take out the top cap with the coil.
3. Add e-liquid to the tank. Do not fill over the MAX mark.  
The Maximum capacity of the tank is 2ml.
4. Screw the top cap with coil back onto the tank.



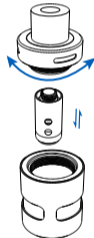
#### **IMPORTANT:**

Prime Coils by adding 3 - 5 drops of e-liquid onto the cotton of coil. Wait **2** minutes before vaping.

#### How to replacing a coil of Slipstream Tank:

**CAUTION:** Make sure there is no e-liquid in the Atomizer / Tank before you pull out the coil .

1. Press down the top cap of the tank and unscrew it from the tank.
2. Carefully pull out the top cap with the coil.
3. Unscrew the coil from the top cap.
4. Screw a new coil onto the top cap.
5. Screw the top cap with new coil back onto the tank.



#### IMPORTANT INFORMATION ABOUT USING NICOTINE-CONTAINING E-LIQUIDS

**Before using nicotine-containing e-liquids the user should read the following information carefully.**

##### **Do not use nicotine containing e-liquids:**

- If you are allergic to nicotine or any of the other ingredient contained in the e-liquid (see manufacturer's label for full details).

##### **Warnings and precautions**

Nicotine-containing e-liquids are not recommended for:

- Non-smokers;
- Young people under the age of 18 years;
- Pregnant or breast feeding women; as nicotine is known to cross the placenta and to be excreted in breast milk;
- Those experiencing general ill health; such as heart disease, stomach and duodenal ulcers, liver or kidney problems, long term throat disease or difficulty breathing due to bronchitis, emphysema or asthma;

- Those who have an overactive thyroid gland or have a phaeochromocytoma (a tumour of the adrenal gland that can affect high blood pressure);
- Those who have diabetes, as nicotine may affect your blood sugar levels.
- Those taking the following medication;
  - Theophylline (to treat breathing problems)
  - Ropinirole (to treat restless legs)
  - Clozapone (to treat schizophrenia)

#### **Possible side effects**

If you inhale too much nicotine or use the product too much you may experience one or more of the following effects:

- Feeling faint;
- Nausea (feeling sick);
- Headache;
- Coughing;

- Irritation in the mouth or throat;
- Dizziness;
- Stomach discomfort
- Hiccups;
- Nasal congestion;
- Vomiting (being sick);
- Chest palpitations;
- Abnormal heart rate.

If you experience any of the above side effects including any possible side effects not listed in this leaflet (user manual), discontinue using the product. If the effect(s) continue after you stop use, consult your doctor or health-care professional and bring this leaflet to their attention.

#### **Addictiveness**

Nicotine is highly addictive; and is therefore intended for adult smokers only.

**How to store the CoolFire MINI:**

Always power off the CoolFire MINI electronic cigarette when it is not being used, or when it is going to be stored. Store the CoolFire MINI electronic cigarette in room temperature (5°C to 30°C) in a clean dry place.

Keep the product out of the sight and reach of children and animals.

**How to dispose of the CoolFire MINI:**

The CoolFire MINI contains a rechargeable battery which should be recycled in a designated waste disposal site. Please dispose of your CoolFire MINI electronic cigarette responsibly with consideration to the environment.

**Product Specifications:**

Operating Voltage: 3.0V-7.5V

Operating Wattage: 6.0W-40W

Battery: 1300mAh

Standby current: 100uA max

Maximum output Wattage: 40W

Maximum output Current: 14.5A

Maximum output Voltage: 7.5V

Clearomizer Resistance: 0.2Ohm (minimum)

Charging: Micro USB DC 5V/1A

**Manufacturer**

Shenzhen Innokin Technology Co., Ltd

Building 6, Xinxintian Industrial Park, Xinsha Road, Shajing, Bao'an District,  
518104, Shenzhen, China

Telephone: +86-755-2989-8770

Email: [info@innokin.com](mailto:info@innokin.com)

**Contact**

Innokin Technology GmbH

Fritz-Neuert-Strasse17, 75181 Pforzheim, Germany

Email: [info@innokin.de](mailto:info@innokin.de)