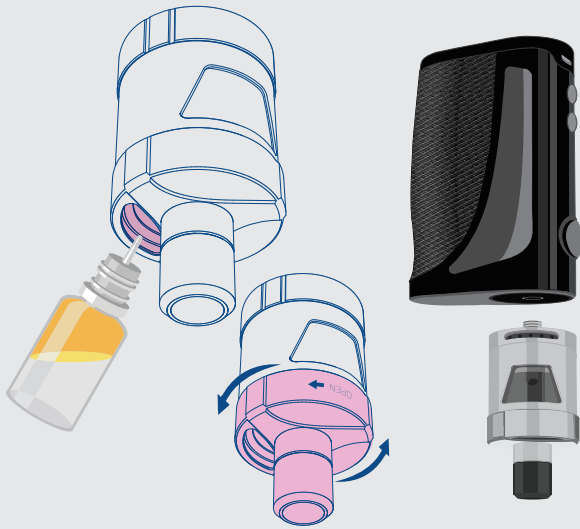


FLIP OPEN TO CONTINUE



2 UNSCREW CAP AND TOP FILL  
PLEASE WAIT 5 MINUTES FOR COIL TO SATURATE.

1 ATTACH TANK

INNOKIN  
**KROMA-A  
ZENITH**  
Platform  
series  
EDITION

QUICK START GUIDE



FLIP FOR MORE INFO

3 3X CLICKS TO TURN ON

4 SELECT COIL



WATTAGE COIL  
TEMP. COIL

WATTAGE

TEMP. CONTROL

5 ADJUST SETTINGS AS DESIRED

6 ENJOY THE VAPOR



COIL TYPE 0.21Ω  
SAME Ni Ti SS W

W SS  
Ni Ti SS

RESISTANCE BATT. LIFE  
0.65Ω 15.0W  
0.00V 0.00S

RESISTANCE, WIRE TYPE  
0.10Ni 180°C  
70.0W 0.00S



For full content, please refer to user manual on the product page at INNOKIN.COM

QUICK REFERENCE GUIDE

BATTERY LIFE INDICATOR



FULL HALF LOW\*

SETTINGS AND MODES

HOLD +

ADJUST V/W/TEMP. UP

HOLD -

ADJUST V/W/TEMP. DOWN

PRESS +/-

FOR PRECISE READING:  
RESISTANCE/VOLTS/PUFF #

HOLD +/-

FLIP DISPLAY ORIENTATION

HOLD +

MODE SELECT (Ni/Ti/SS/W)

HOLD -

ADJUST RAMP UP WATTAGE IN TC MODE

SUPPORT

facebook.com/Innokin.Technology

instagram.com/innokintechnology

twitter.com/innokintech

reddit.com/r/innokin

support@innokin.com