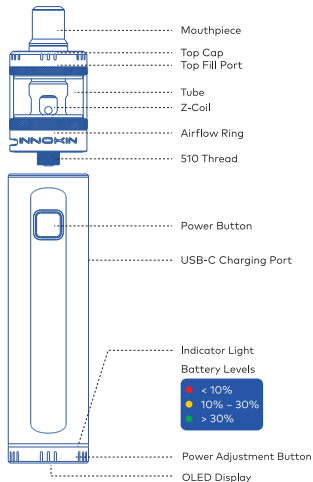
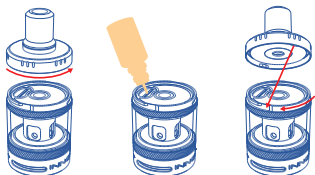


COMPONENTS



FILLING THE TANK



- Push down and rotate the top cap one quarter turn counterclockwise and remove it to access the fill port.
- Add your E-liquid through the fill port.
- Replace the top cap. Align the top cap with the groove, then push down and rotate it one quarter turn clockwise to lock in its place.

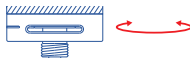
TIPS

- Wait for at least five minutes after filling to allow the new coil to saturate with E-liquid.
- You can additionally manually prime your coil by placing three drops of E-liquid into the coil.
- Keep the tank from going completely empty of E-liquid. Refill it regularly to avoid dry hits or coil damage.

*For more information and a demonstration, scan the QR card to see the instructional videos.

ADJUSTING THE AIRFLOW

Rotate the airflow ring on the bottom of the tank and customize the airflow to achieve your desired draw.

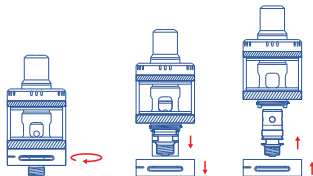


CHANGING THE COIL

When you experience a burnt taste or a decrease in flavour and/or vapour production, it's time to change the coil.

- Unscrew the tank base and remove the coil.
- Prime and install a new coil in its place.
- Be sure the coil notches line up with the tank notches.
- Screw the tank base back into place.

*A good rule of thumb would be to replace the coil at least once per week.



If you have any questions, contact support@innokin.com

facebook.com/Innokin.Technology

instagram.com/innokintechology

twitter.com/innokintech

reddit.com/r/innokin

support@innokin.com

Manufacturer: Shenzhen Innokin Technology Co., Ltd.
Address: 1st-5th Floor, Building 6, Xinxintian Industrial Park, Xinsha Road, Shaer Community, Shajing, Baoan District, 518104, Shenzhen, China.
Telephone: +86 755 2989 8770
Email: info@innokin.com
Production License: 5144030162
ISO 9001 / 14001 / 45001, ISO 13485, and cGMP Certified.
MADE IN CHINA

European Representative:
FRANCE VAPOTAGE DISTRIBUTION
57 impasse de la Ferme Carbon
Rue de la Croix Bougard 59810 LESQUIN France
Telephone: +33 320020152
Email: guillaume.vilain@innokin.fr

KEEP OUT OF REACH OF CHILDREN.



POWER ON/OFF THE DEVICE

Click the Power Button three times within two seconds.

INTERFACE

After each vaping session, the OLED display will show your puff time.

POWER ADJUSTMENT

Click the Power Button twice.

When the wattage value flashes on the OLED display, turn the power adjustment button to increase or decrease the wattage.

*Ensure that the wattage setting falls within the coil's recommended power range to prevent burning.

CHARGING

- Charge promptly based on the battery level.
- Use the provided charging cable and a standard USB output charger with the correct charging current and voltage range.
- While charging, the battery level will be indicated by a red LED light when it's below 90% and a green LED light when it's above 90%.
- When fully charged, the LED light will turn off.

CAUTIONS

- Turn the device off when not in use to avoid depleting the battery and minimize excess battery wear.
- Do not leave the charging device unattended.
- Protect the device from direct sunlight, dust, moisture, or mechanical shock.
- Avoid dropping, throwing, or mishandling the device to prevent damage.
- Keep the device away from any water, liquid or flammable gas.

SPECIFICATIONS

Dimensions: $\phi 25 \times 136$ mm

Capacity: 4mL / 2mL TPD

Coils & Recommended Wattage:

Z-Coil 0.8 Ω : 15-18W / Z-Coil 0.3 Ω : 30-40W

Built-in Battery Capacity: 2100mAh

Output Power: 6.0-40.0W

Charging Current: DC 5.0V / 1.7A

Press The Power Button To Activate Vape

PACKING LIST

| | |
|---|-------------------------|
| 1x EZ Tube Device | 1x RDL Mouthpiece |
| 1x Zenith Minimal Tank | 1x O-Ring Set |
| (MTL Z-Coil 0.8 Ω Pre-installed) | 1x USB-C Charging Cable |
| 1x RDL Z-Coil 0.3 Ω | 1x Tutorial QR Card |
| 1x Replacement Tube | 1x Quick Guide |
| 1x MTL Mouthpiece | 1x Warning Booklet |

PROTECTIONS

Low Voltage Protection

At lower battery voltage, pressing the power button may trigger low voltage protection.

The device will cut power immediately and the red LED light will flash 8 times to indicate low voltage protection.

No Load / High Resistance Protection

When no load resistance or high resistance is detected, pressing the power button may trigger no load protection/high resistance protection.

The device will cut power immediately, and the OLED display will show - - - - while the green LED light flashes.

Short Circuit Protection

When low resistance is detected, pressing the power button may trigger short circuit or low resistance protection.

The device will cut power immediately, and the OLED display will show - - - - while the LED light stays on for 5 seconds.

Auto-Shut Off Protection

The device will automatically cut power if the power button is held for 15 or more seconds. The OLED will display - - - - and the LED light will flash 10 times to indicate auto-shut off protection.

Overheat Protection

When the PCBA (Printed Circuit Board Assembly) temperature sensor detects high temperature, pressing the power button may trigger the PCBA overheat protection.

The device will cut power immediately, and the OLED display will show - - - - while the red LED light flashes 3 times, and then 3 times again.

INNOKIN®

EZ TUBE
ZENITH // minimal

User manual

