

Protections

LOW VOLT

COIL CHECK

LOW RES

COIL SHORT

TIME OUT

HIGH TEMP

Low Battery Protection

If the battery voltage is too low before or during vaping, the device will switch off the output and the OLED Display will show "LOW VOLT".

No Load / High Resistance Protection

When no-load resistance or high resistance is detected, the device will switch off the output and the OLED Display will show "COIL CHECK".

Short Circuit Protection

If low resistance is detected before vaping, the OLED Display will show "LOWRES".

If low resistance is detected during vaping, the OLED Display will show "COIL SHORT".

Auto-Shut Off Protection

If the puffing time exceeds 10 seconds, the device will switch off the output and the OLED Display will show "TIME OUT".

Overheat Protection

When the PCBA (Printed Circuit Board Assembly) temperature sensor detects a high temperature, the device will switch off the output and the OLED Display will show "HIGH TEMP".

SAFETY GUIDELINES AND WARNING:

PLEASE READ THIS SECTION CAREFULLY TO ENSURE YOU RECEIVE MAXIMUM BENEFITS FROM THE PRODUCT AND ENJOY VAPING WITH IT IN THE MOST SAFE AND EFFECTIVE WAYS POSSIBLE.

1. THIS PRODUCTS INTENDED FOR USE BY ADULTS OF LEGAL SMOKING AGE (21+OR HIGHER). THIS PRODUCT IS NOT RECOMMENDED FOR NON-SMOKERS, YOUNG PEOPLE UNDER THE AGE OF 21 YEARS, PREGNANT OR BREAST FEEDING WOMEN AND THOSE EXPERIENCING GENERAL ILL HEALTH.

2. THIS PRODUCT MAY BE USED WITH E-LIQUIDS THAT CONTAIN NICOTINE. IF YOU ARE USING E-LIQUID CONTAINING NICOTINE PLEASE REFER TO THE INFORMATION PROVIDED IN SECTION "IMPORTANT INFORMATION ABOUT USING NICOTINE CONTAINING E-LIQUIDS" OR CHECK WITH YOUR E-LIQUID PROVIDER FOR MORE INFORMATION.

3. THIS PRODUCT IS ONLY DESIGNED TO BE USED WITH HIGH QUALITY E-LIQUID. IT IS NOT INTENDED FOR USE WITH LOOSE TOBACCO LEAF OR HERBAL SUBSTANCES. OKINO IS NOT RESPONSIBLE FOR ANY ATOMIZER OR BATTERY DAMAGE DUE TO THE USE OF LOW QUALITY E-LIQUID, DRY HERB, OR OTHER MATERIALS FOR WHICH THIS PRODUCT WAS NOT DESIGNED.

4. THIS PRODUCT IS NOT INTENDED TO TREAT, MITIGATE, PREVENT OR CURE ANY DISEASE OR CONDITION. IT IS NOT INTENDED FOR USE AS A SMOKING CESSATION DEVICE.

5. ALWAYS KEEP THIS PRODUCT OUT OF REACH OF CHILDREN AND PETS.

6. DO NOT MISUSE, MISHANDLE OR STORE THIS PRODUCT IMPROPERLY. IN ORDER TO PROLONG THE OPERATION OF THIS PRODUCT, PLEASE DO NOT USE, PLACE OR STORE IT IN EXCESSIVELY HOT OR COLD ENVIRONMENTS.

7. DO NOT ATTEMPT TO REPAIR THE PRODUCT BY YOURSELF AS DAMAGE OR PERSONAL INJURY MAY OCCUR.

8. THIS PRODUCT IS NOT WATERPROOF. KEEP IT DRY AT ALL TIMES.

9. DO NOT ALLOW ANY LIQUIDS OR E-JUICE TO ENTER THE DEVICE THROUGH THE TOP THREADING OR THE USB PORTS. IF ANY LIQUIDS ENTER THE DEVICE, OR COME INTO CONTACT WITH THE PCB, PLEASE DISCONTINUE USING OR CHARGING THE DEVICE AND CONTACT YOUR LOCAL AUTHORIZED OKINO VENDOR IMMEDIATELY.

10. OKINO IS NOT RESPONSIBLE FOR BATTERY AND CHARGER EXPLOSIONS, OR MALFUNCTIONS, DUE TO THE USE OF A LOW-QUALITY CHARGER. ONLY USE THE ORIGINAL MICRO USB CABLE TO CHARGE THE DEVICE. WE RECOMMEND THAT YOU USE A HIGH QUALITY USB WALL CHARGER (CE/UL CERTIFIED).

11. THIS PRODUCT IS NOT DESIGNED FOR USE WITH A CAR CHARGER. THIS PRODUCT DOES NOT COME INCLUDED WITH A CAR CHARGER.

12. OBEY LOCAL LAWS OR REGULATIONS REGARDING ELECTRONIC CIGARETTES WHEN VAPING. IF YOU ARE IN AN AREA WHERE THERE ARE ANY BANS OR POTENTIAL DANGERS, PLEASE DO NOT USE THIS PRODUCT.

IMPORTANT INFORMATION ABOUT USING NICOTINE-CONTAINING E-LIQUIDS

BEFORE USING NICOTINE-CONTAINING E-LIQUIDS THE USER SHOULD READ THE FOLLOWING INFORMATION CAREFULLY.

DO NOT USE NICOTINE-CONTAINING E-LIQUIDS:

• If you are allergic to nicotine or any of the other ingredients contained in the e-liquid (see manufacturer's label for full details).

WARNINGS AND PRECAUTIONS

NICOTINE-CONTAINING E-LIQUIDS ARE NOT RECOMMENDED FOR:

• Those experiencing general ill health; such as heart disease, stomach and duodenal ulcers, liver or kidney problems, long term throat disease or difficulty breathing due to bronchitis, emphysema or asthma.

• Those who have an overactive thyroid gland or have a pheochromocytoma (a tumour of the adrenal gland that can affect high blood pressure)

• Those who have diabetes, as nicotine may affect your blood sugar levels

• Those taking the following medication:

• Theophylline (to treat breathing problems) • Ropinirole (to treat restless legs) • Clozapone (to treat schizophrenia)

IF YOU INHALE TOO MUCH NICOTINE OR USE THE PRODUCT TOO MUCH YOU MAY EXPERIENCE ONE OR MORE OF THE FOLLOWING EFFECTS:

• Feeling faint • Nausea (feeling sick) • Irritation in the mouth or throat
• Headache • Coughing • Stomach discomfort
• Nasal congestion • Dizziness • Vomiting (being sick)
• Chest palpitations • Hiccups • Abnormal heart rate

If you experience any of the above side effects including any possible side effects not listed in this user manual, discontinue using the product. If the effect(s) continue after you stop use, consult your doctor or healthcare professional and bring this leaflet to their attention.

ADDICTIVENESS

Nicotine is highly addictive; and is therefore intended for adult smokers only.

HOW TO STORE AN ELECTRONIC CIGARETTE

Always power off the electronic cigarette when it is not being used, or when it is going to be stored. store the electronic cigarette in room temperature (5°c to 30°c) in a clean dry place. keep the product out of sight and reach of children and animals.

HOW TO DISPOSE OF AN ELECTRONIC CIGARETTE

The electronic cigarette contains a rechargeable battery which should be recycled in a designated waste disposal site. Please dispose of your electronic cigarette responsibly with consideration to the environment.

BATTERY CARE GUIDE
READ BEFORE USE!

INTERNAL BATTERY
Do not leave device unattended while charging.

Keep a charge of more than 10% to maximize battery lifespan.

Only charge with a high quality Wall Adapter and stable power source with USB-C cable.

Do not use with a car charger.

Do not leave device charging for extended periods of time. Stop charging when the battery is full.

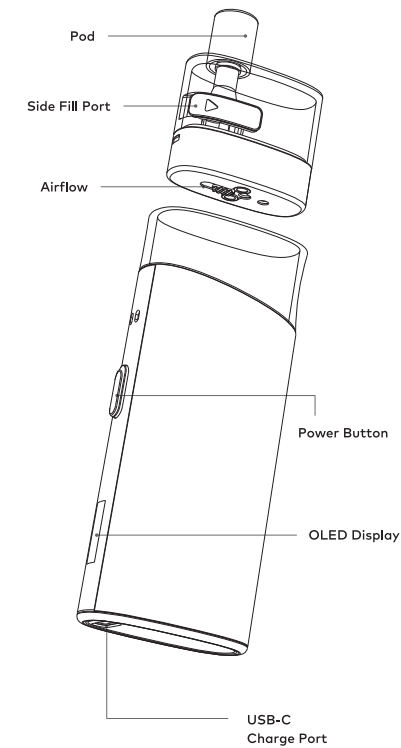
"Vape-while-charging" must be used with +10% battery charge.

Carefully insert the USB plug correctly. Do not use force or the port may be damaged.

Check with your airline before flying with your vaporizer.

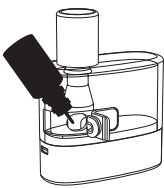
NE-MO
NE-MO

Components



Filling the Pod

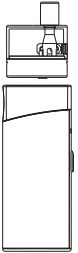
Open the black silicone plug on the side to add E-liquid.



Important

• Wait for at least five minutes after filling to allow the new pod to saturate with E-liquid.

• Keep the pod from going completely empty of E-liquid. Refill it regularly to avoid dry hits or coil damage.



Installing and replacing the Pod from the Device

Magnetic pod: The pod can be removed directly from the device. When installing the pod, align the device with the corresponding hole under the pod.

When the pod is installed, the atomizer resistance value will be shown on the OLED Display.



Adjusting the Airflow

The airflow control is located at the bottom of the pod. Adjust the airflow button to achieve the desired draw preference.



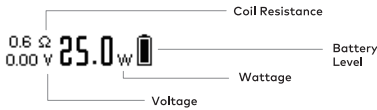
Power On/Off the Device

Press the power button five times consecutively to turn the device on or off.

Button Activation Setting

- 1.Press and hold the power button for 3 seconds while the device is off to enter button activation setting.
- 2.Press the button to toggle between modes. After 3 seconds of inactivity, the settings will be saved automatically and the device will exit button activation setting.
- **BTN OFF:** Disables the button for vaping
- **BTN ON:** Enables the button for vaping
- 3.In BTN ON mode, when the device is powered on, it starts in an unlocked state. However, after 30 seconds of inactivity, the system will enter BTN OFF mode, disabling button-activated vaping and power adjustment.
- 4.To enable the button-activated vaping, inhale from the mouthpiece or press the button five times consecutively.

Interface



Puff Time

While vaping, the duration of your current draw will be displayed in seconds.

Adjusting the Wattage

- 1.Press the power button three times continuously. When the power value on the screen starts flashing, press the button to increase the wattage.
- 2.Each press increases the wattage by 0.5W between 6–20W, and by 1.0W between 20–30W. The wattage will cycle back to the minimum after reaching the maximum.
- 3.After selecting the wattage, wait for 3 seconds or inhale from the mouthpiece to exit the wattage setting.

Charging

- Charge promptly based on battery level.
- Use USB-C charging cable and a standard output charger with the correct charging current and voltage range.
- Charging pauses during vaping and resumes after vaping.

Caution

- Turn the device off when not in use to avoid depleting the battery and minimize excess battery wear.
- Avoid dropping, throwing, or mishandling the device to prevent damage.
- Protect the device from direct sunlight, dust, moisture, or mechanical shock.
- Keep the device away from any water, liquid, or flammable gas.
- Keep the contents of this package out of reach of children, non-smokers and animals.
- Do not leave the device charging while unattended.
- Do not use it if pregnant or breast feeding.

Warning: Do not use this product if you suffer from heart disease, severe hypertension, diabetes, stomach ulcers or have a history of seizures.

EEE Recycling

This product should not be treated as household waste, instead it should be handed over to the applicable collection point for the recycling of electrical and electronic equipment.

Specifications

Dimensions: 35.5×18.5×99 mm
Pod Capacity: 2.0mL/4.0mL
Coil: 0.4Ω (25–30W) / 0.6Ω (18–22W) / 0.8Ω (12–15W)
Output Power: 6.0–30.0W
Battery Capacity: 3.8V/1750mAh/6.65Wh/15A
Charging Current: DC 5.0V/900mA
Draw-activated Vape/ Button-activated Vape

INNOKIN
× OKINO

Manufacturer: Shenzhen Vapewell Technology Co., Ltd.
Address: 3rd Floor, Building 10, Xinxintian Industrial Park, Xinsha Road, Shaer Community, Shajing, Baoan District, 518104, Shenzhen, China.
Telephone: +86 755 2768 5365
Email: info@innokin.com
Website: www.innokin.com
Production License: 5144030172
ISO 9001 and ISO 14001 Certified.
MADE IN CHINA

European Representative:
FRANCE VAPOTAGE DISTRIBUTION
68 rue d'ennevelin 59710 Avelin France
Telephone: +33 320020152
Email: Contact@innokin.fr



KEEP OUT OF REACH OF CHILDREN.