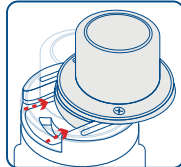


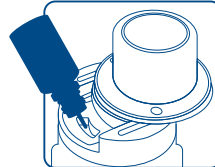
1 ATTACH TANK

2 SLIDE CAP TO OPEN AND TOP FILL

REFILLING THE TANK



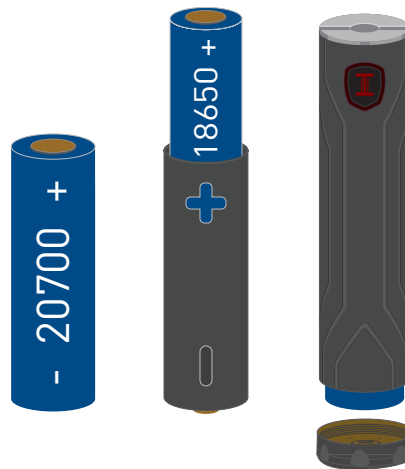
Push in the direction of the arrow, to slide open top cap



Carefully fill with e-liquid. Please wait 5 minutes before vaping

3 INSERT 20700 or 18650 (with adapter) BATTERY*

*FOLLOW BATTERY ORIENTATION



TIPS AND BEST PRACTICES

- BUY ONLY HIGH QUALITY BATTERIES FROM A TRUSTED SOURCE.
- ONLY USE A HIGH QUALITY 18650/20700 BATTERY CHARGER.
- DO NOT LEAVE BATTERIES UNATTENDED WHILE CHARGING. REMOVE BATTERY WHEN FULLY CHARGED.
- ALWAYS STORE BATTERIES SAFELY IN A SILICONE SLEEVE WHEN NOT IN USE.
- BATTERIES MUST ALWAYS BE STORED IN A PROTECTIVE SLEEVE OR CASE WHEN PLACED IN A POCKET OR BAG.
- DO NOT REMOVE THE BATTERY WRAP.
- IF THE BATTERY WRAP IS DAMAGED, REPLACE BATTERY IMMEDIATELY.
- IF THE WRAP IS DISCOLORED, REPLACE BATTERY.
- DO NOT USE DAMAGED BATTERIES.

SUPPORT

- facebook.com/Innokin.Technology
- instagram.com/innokintechnology
- twitter.com/innokintech
- reddit.com/r/innokin
- support@innokin.com